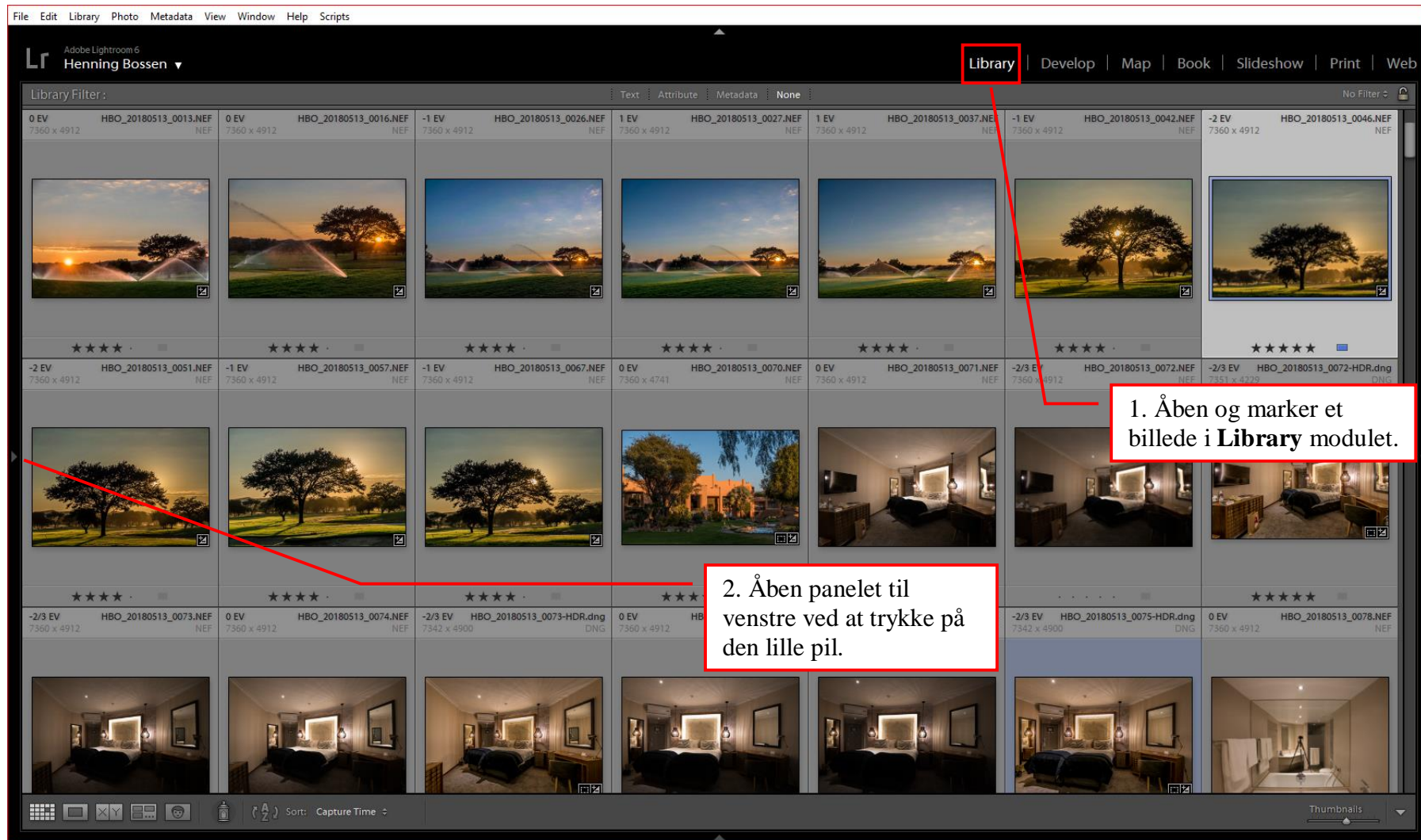


Oprette ny User preset for export i Adobe Lightroom.



File Edit Library Photo Metadata View Window Help Scripts

Adobe Lightroom 6
Henning Bossen

Library | Develop | Map | Book | Slideshow | Print | Web

Navigator FIT FILL 1:1 3:1 Library Filter: Text Attribute Metadata None No Filter

Catalog
All Photographs 10602
All Synced Photographs 0
Quick Collection + 32
Previous Import 2

OS (C:) 0.2 / 1.8 TB
Billedarkiv 1761
Coolscan V 1277
Nikon D3 484
2008 412
2009 12
2010 12
2011 47
2012 1
Pictures 16

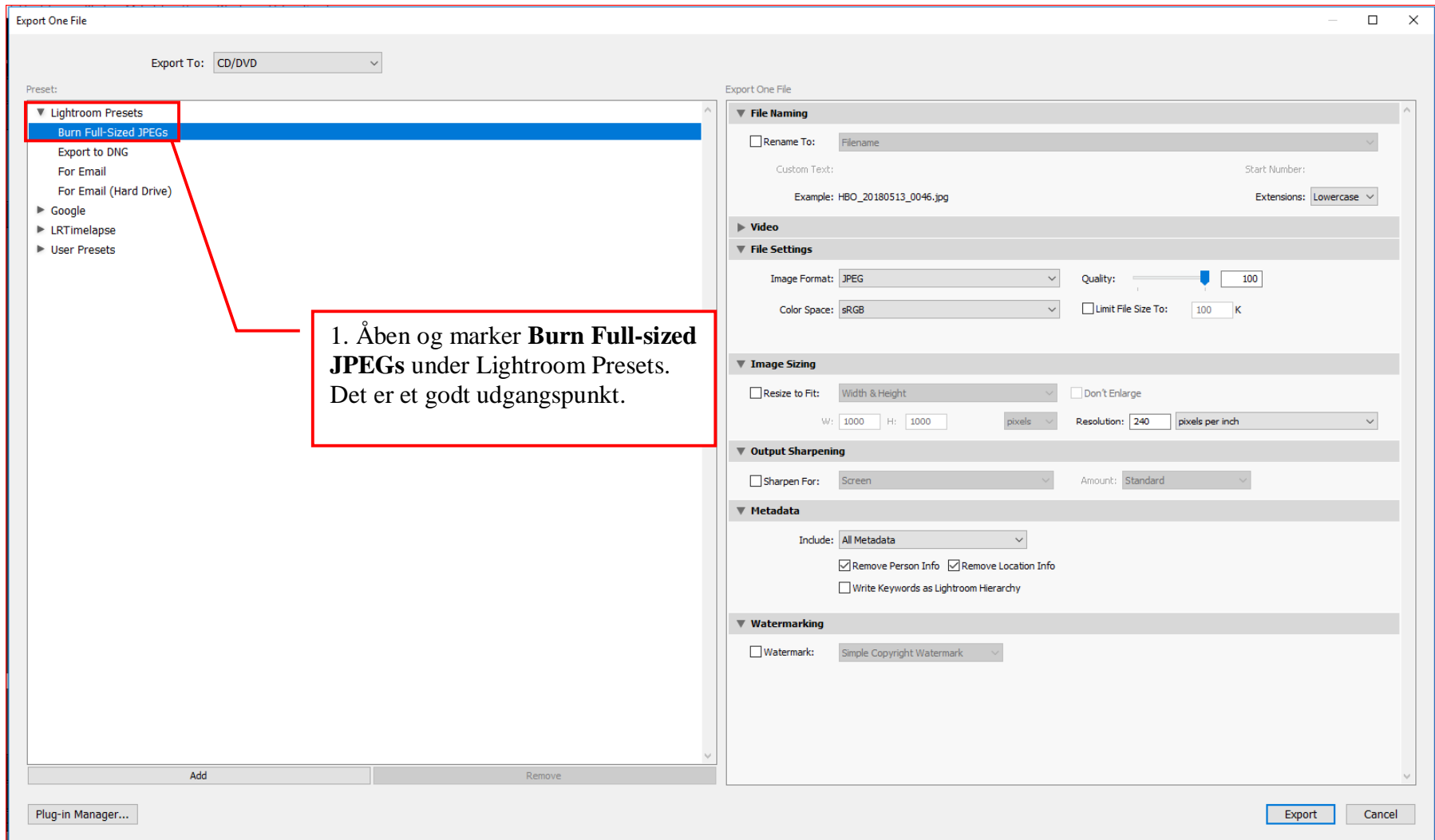
Lokal disk (F:) 0.6 / 3.6 TB
Billedarkiv 8824
Epson V750 114
Ferie 8
Nikon Coolscan V 31
2016 12
2017 19
Nikon D3 6663
Nikon D500 1199
Nikon D810 809
2016 292
2017 121
2018 396
20180401 5
20180512 Na... 366
20180701 15
20180728 10

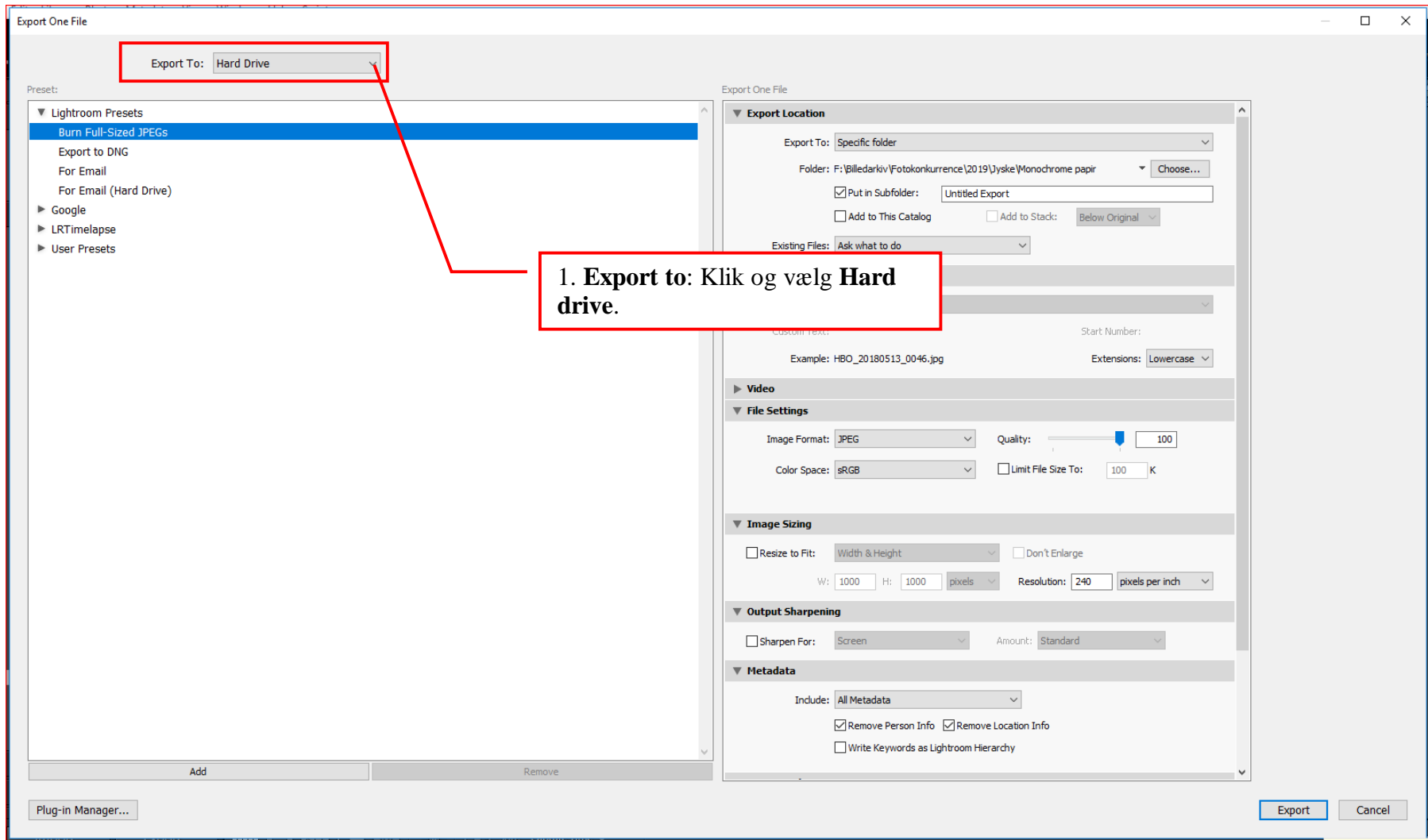
Collections
Publish Services

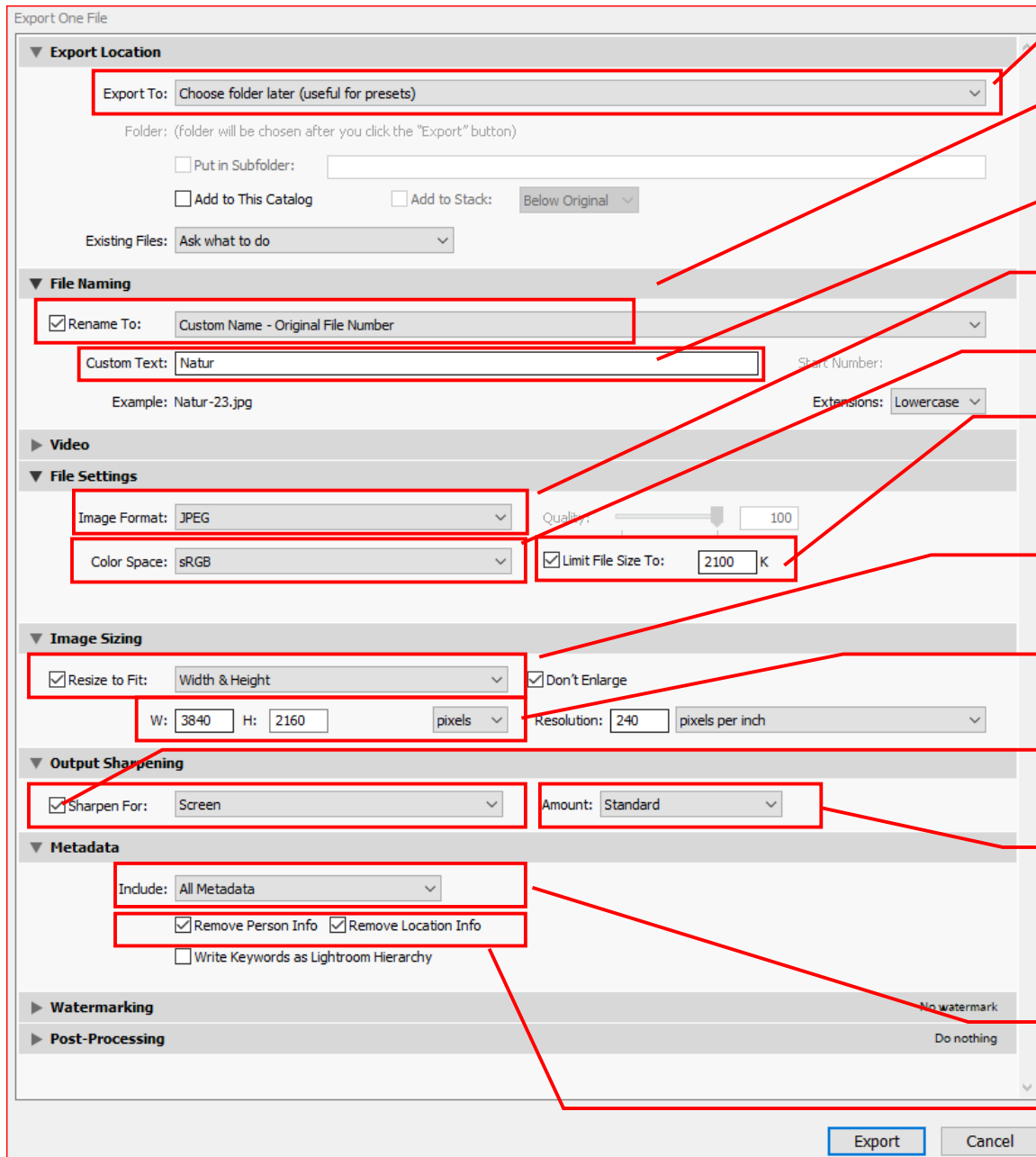
Import... Export...

Grid Sort: Capture Time

Tryk dernæst på **Export**.







1. **Export to:** Klik og vælg **Choose folder later (useful for presets)**.

2. **Rename To:** Klik og vælg **Custom Name - Original File Number**

3. **Custom Text:** Skriv navn på kategori.

4. **Image Format:** Klik og vælg **JPEG**.

5. **Color Space:** Klik og vælg **sRGB**.

6. Sæt et flueben i feltet **Limit File Size To** og skriv 2100 i feltet for fil størrelsen. Det giver en fil størrelse på 2,1MB.

7. Sæt et flueben i feltet **Resize to Fit:** Klik og vælg **Width & Height**.

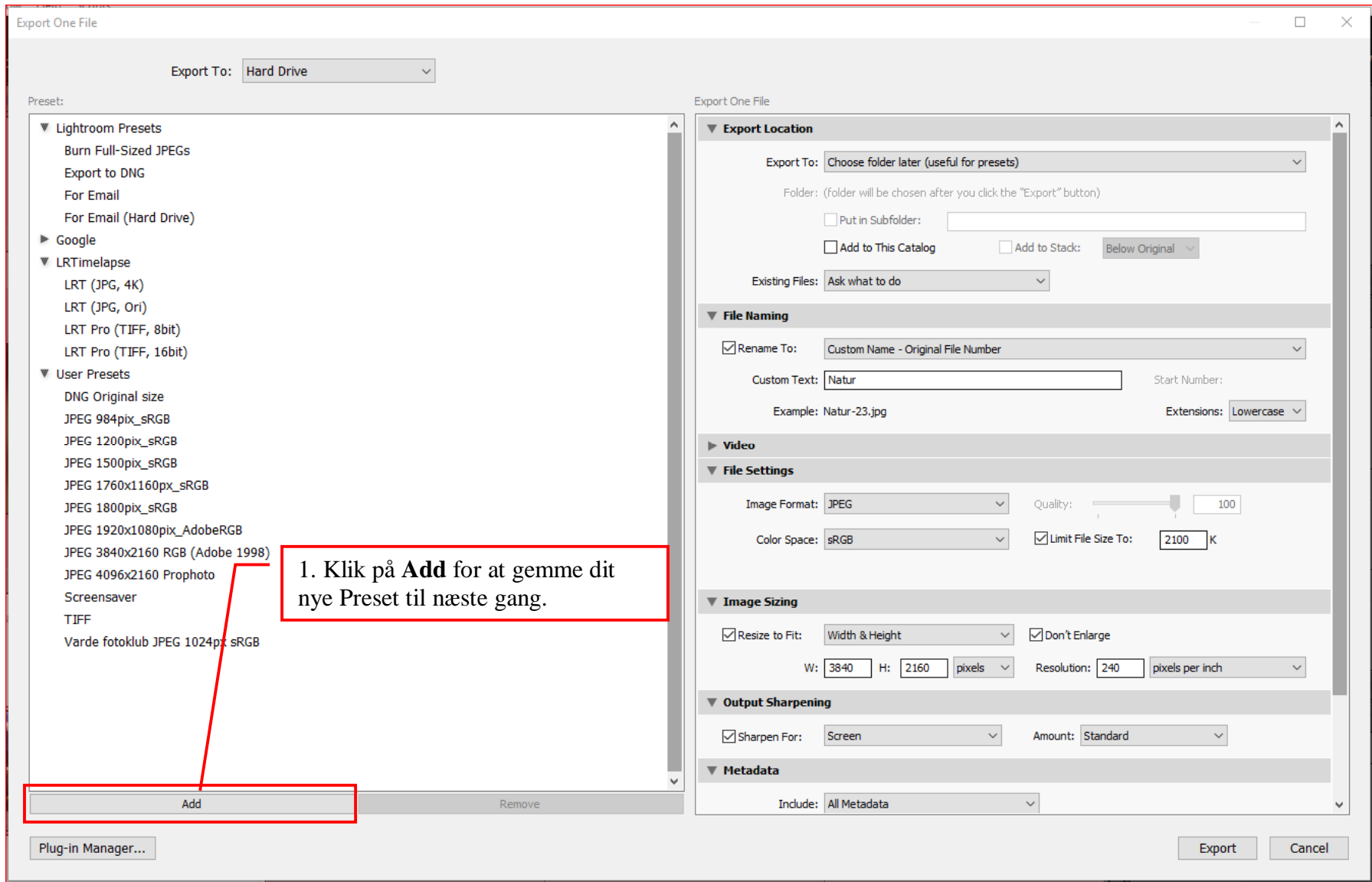
8. Skriv **W:3840** og **H: 2160** i feltet W og H. Klik og vælg **pixels**.

9. Sæt et flueben i feltet **Sharpen For:** Klik og vælg **Screen**.

10. **Amount:** Klik og vælg **Standard**. Se på billedet i 100% opløsning efter eksport, for at vurdere om skarpheden er passende, for høj eller for lav.

11. **Include:** Klik og vælg **All Metadata**.

12. Sæt flueben i både **Remove Person Info** og **Remove Location Info**.



Export To: Hard Drive

Preset:

- ▼ Lightroom Presets
 - Burn Full-Sized JPEGs
 - Export to DNG
 - For Email
 - For Email (Hard Drive)
- ▶ Google
- ▼ LRTimelapse
 - LRT (JPG, 4K)
 - LRT (JPG, Ori)
 - LRT Pro (TIFF, 8bit)
 - LRT Pro (TIFF, 16bit)
- ▼ User Presets
 - DNG Original size
 - JPEG 984pix_sRGB
 - JPEG 1200pix_sRGB
 - JPEG 1500pix_sRGB
 - JPEG 1760x1160px_sRGB
 - JPEG 1800pix_sRGB
 - JPEG 1920x1080pix_AdobeRGB
 - JPEG 3840x2160 RGB (Adobe 1998)
 - JPEG 4096x2160 Prophoto
 - Screensaver
 - TIFF
 - Varde fotoklub JPEG 1024px sRGB

1. Klik på **Add** for at gemme dit nye Preset til næste gang.

Add Remove

Plug-in Manager...

Export One File

▼ Export Location

Export To: Choose folder later (useful for presets)

Folder: (folder will be chosen after you click the "Export" button)

Put in Subfolder:

Add to This Catalog Add to Stack: Below Original

Existing Files: Ask what to do

▼ File Naming

Rename To: Custom Name - Original File Number

Custom Text: Natur Start Number:

Example: Natur-23.jpg Extensions: Lowercase

▶ Video

▼ File Settings

Image Format: JPEG Quality: 100

Color Space: sRGB Limit File Size To: 2100 K

▼ Image Sizing

Resize to Fit: Width & Height Don't Enlarge

W: 3840 H: 2160 pixels Resolution: 240 pixels per inch

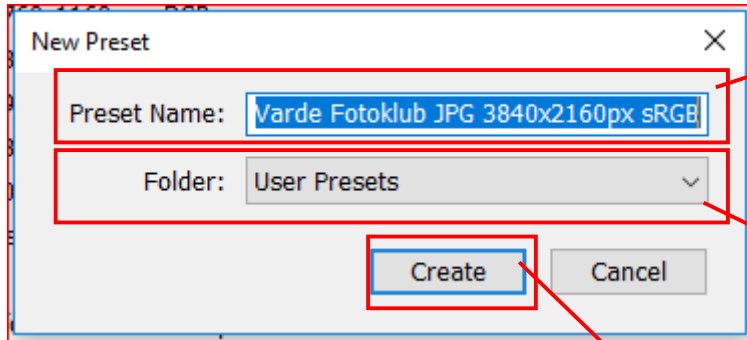
▼ Output Sharpening

Sharpen For: Screen Amount: Standard

▼ Metadata

Include: All Metadata

Export Cancel



1. **Preset Name:** Skriv et sigende navn til dit nye preset. Eksempelvis: *Varde Fotoklub JPG 3840x2160px sRGB*.

2. **Folder:** Klik og vælg **User Presets**.

3. Tryk på **Create** for at gemme.

